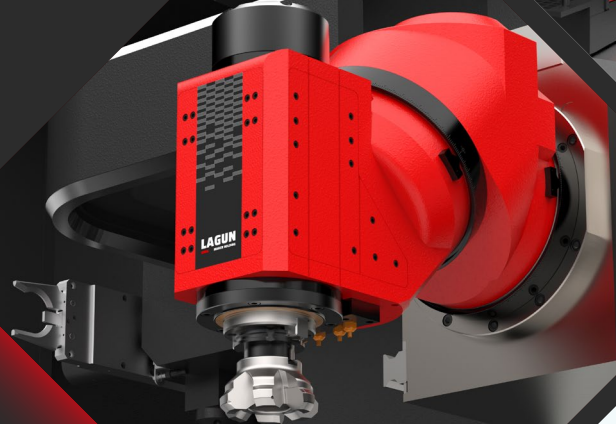


TDT MACHINE TOOLS PRESENTS:

LAGUN UNIVERSAL MILLING MACHINES



Simplicity, organisation and efficiency.



LAGUN
MAHER HOLDING

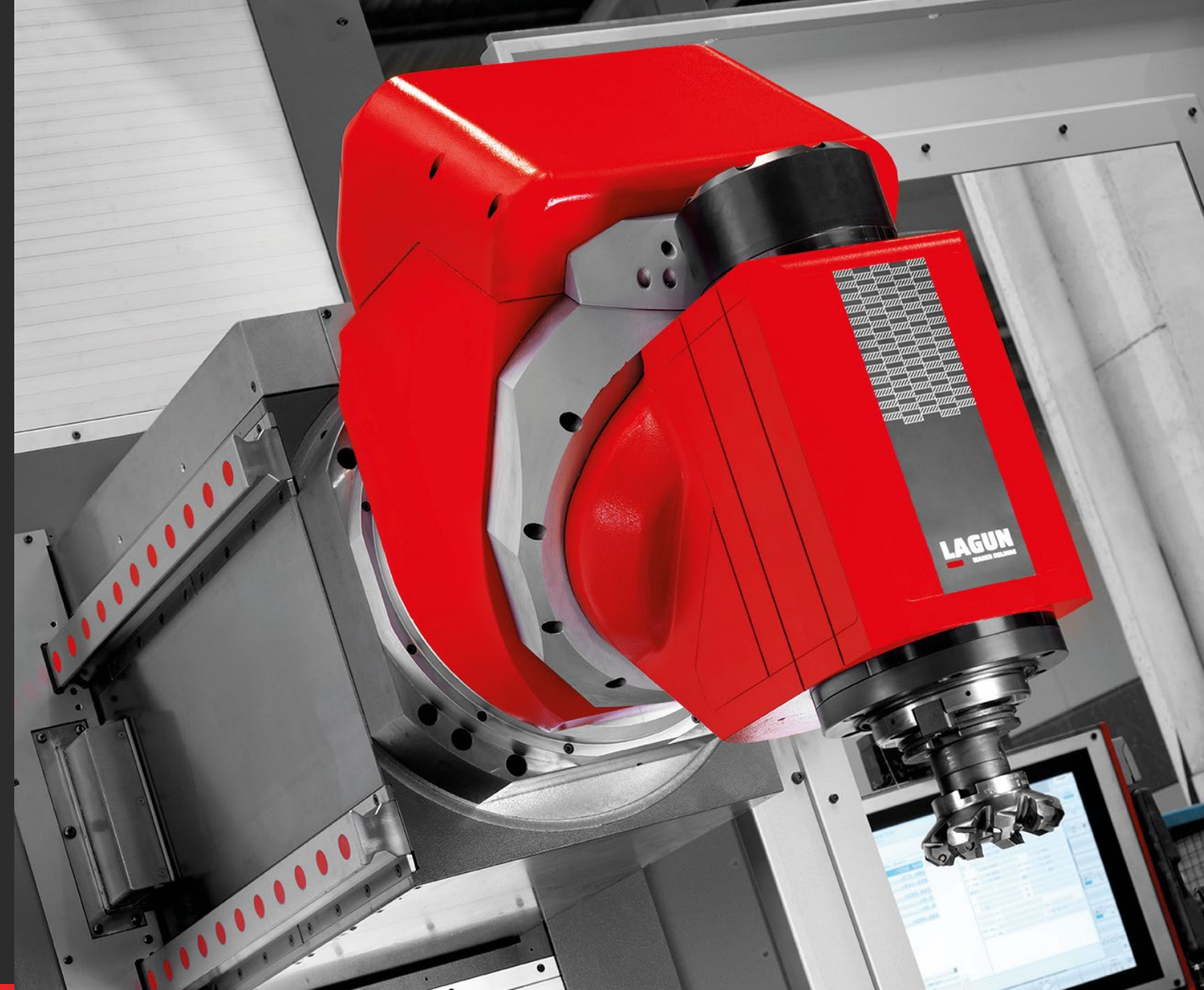


Simplicity, organisation and efficiency with state of the art technology.

Our technology contained and organised in easily interchangeable and reconfigurable modules. Because the highest technology does not have to be complicated.



BOXED TECHNOLOGY



MAHER HOLDING

SKILLED IN CREATING SOLUTIONS.

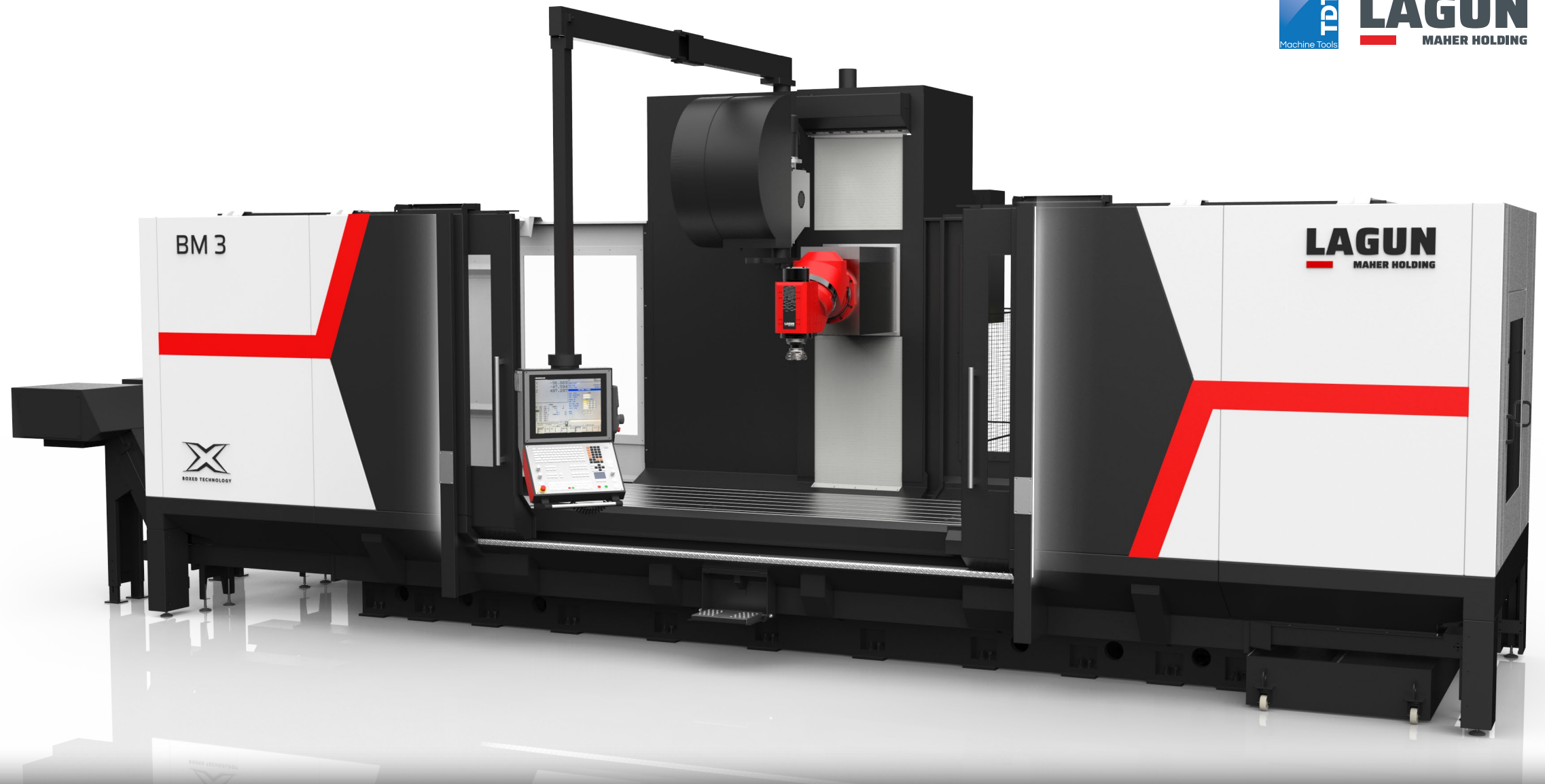
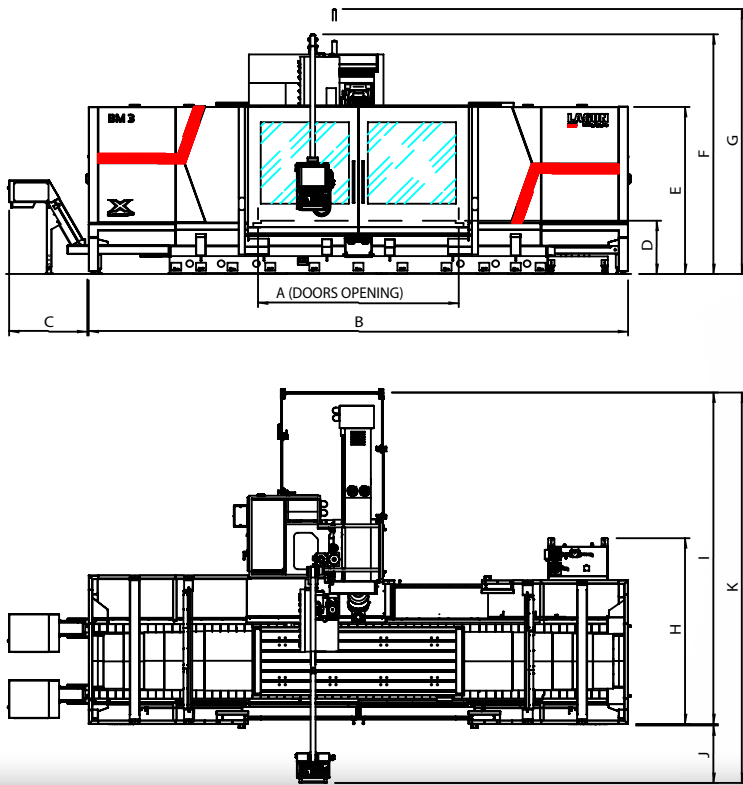
We belong to **MAHER HOLDING**, industrial group formed by companies specialized in machine tools, that provides a portfolio of machining solutions oriented to the complex needs of the industry.

More information about **MAHER HOLDING** and the rest of companies that belong to the group:

www.maherholding.es

BM-BL

BED TYPE MILLING MACHINE.



	A	B	C	D	E	F	G	H	I	J	K
BM - BL 2	2.200	6.560									
BM - BL 3	3.200	8.560			2.665 3.165 (1) 3.665 (2)	3.815 4.315 (1) 4.815 (2)	...	2.963 3.198 (3)	5.269 5.634 (3)	931	6.200 6.566 (3)
BM - BL 4	4.200	10.560	1.260	865			4.715 (1) ...				
BM - BL 5	5.200	12.560									

(1) BM/BL (Z 2.000) - (2) Optional BL / BL Wahlweise (Z 2.500) - (3) Standard BL / BL Norm.

TECHNICAL FEATURES

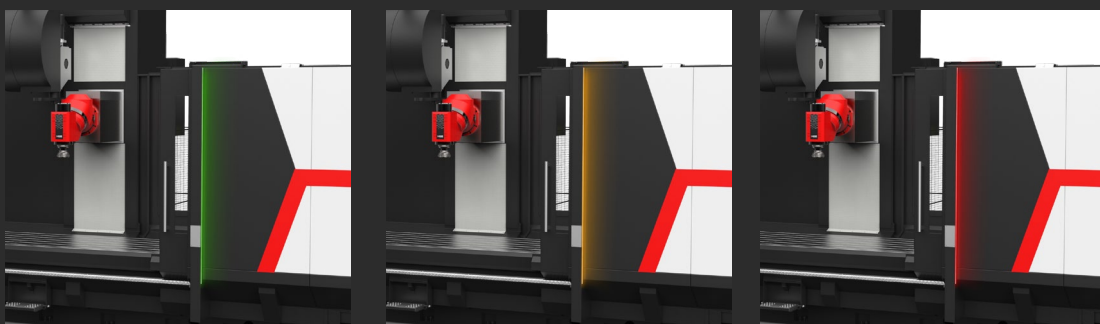
		BM 2	BM 3	BM 4	BM 5	BL 2	BL 3	BL 4	BL 5
Table surface Aufspannfläche	mm	2.100 x 1.100	3.100 x 1.100	4.100 x 1.100	5.100 x 1.100	2.100 x 1.300	3.100 x 1.300	4.100 x 1.300	5.100 x 1.300
T slots T-Nuten	mm	7 x 22 x 160				8 x 22 x 160			
Longitudinal traverse=X Längsverfahrweg=X	mm	2.000	3.000	4.000	5.000	2.000	3.000	4.000	5.000
Cross traverse=Y Querverfahrweg=Y	mm	1.300				1.500			
Vertical traverse=Z Vertikalverfahrweg=Z	mm	1.500 / 2.000*				2.000 / 2.500*			
Max. Weight on the table Maximale Tischbelastung	Kg	8.000	10.000	12.000	14.000	8.000	10.000	12.000	14.000
Spindle taper Spindelaufnahme		50 DIN 69871/A + DIN 69872/A				50 DIN 69871/A + DIN 69872/A			
Speed range Spindeldrehzahlbereich	min ⁻¹	6.000				6.000			
Main motor power Spindelmotor	kW	31 - 37,2 / 40 - 53*				40 - 53			
Torque Drehmoment	Nm	982 / 1.400*				972 / 1.400*			
Rapid feed Eilgänge	mm/mn	30.000				30.000			
Machine net weight Maschinen-Nettogewicht	Kg	18.200	21.800	26.000	30.100	19.800	23.700	27.800	32.000

*Opcional / Wahlfrei

EXECUTION

WARNING

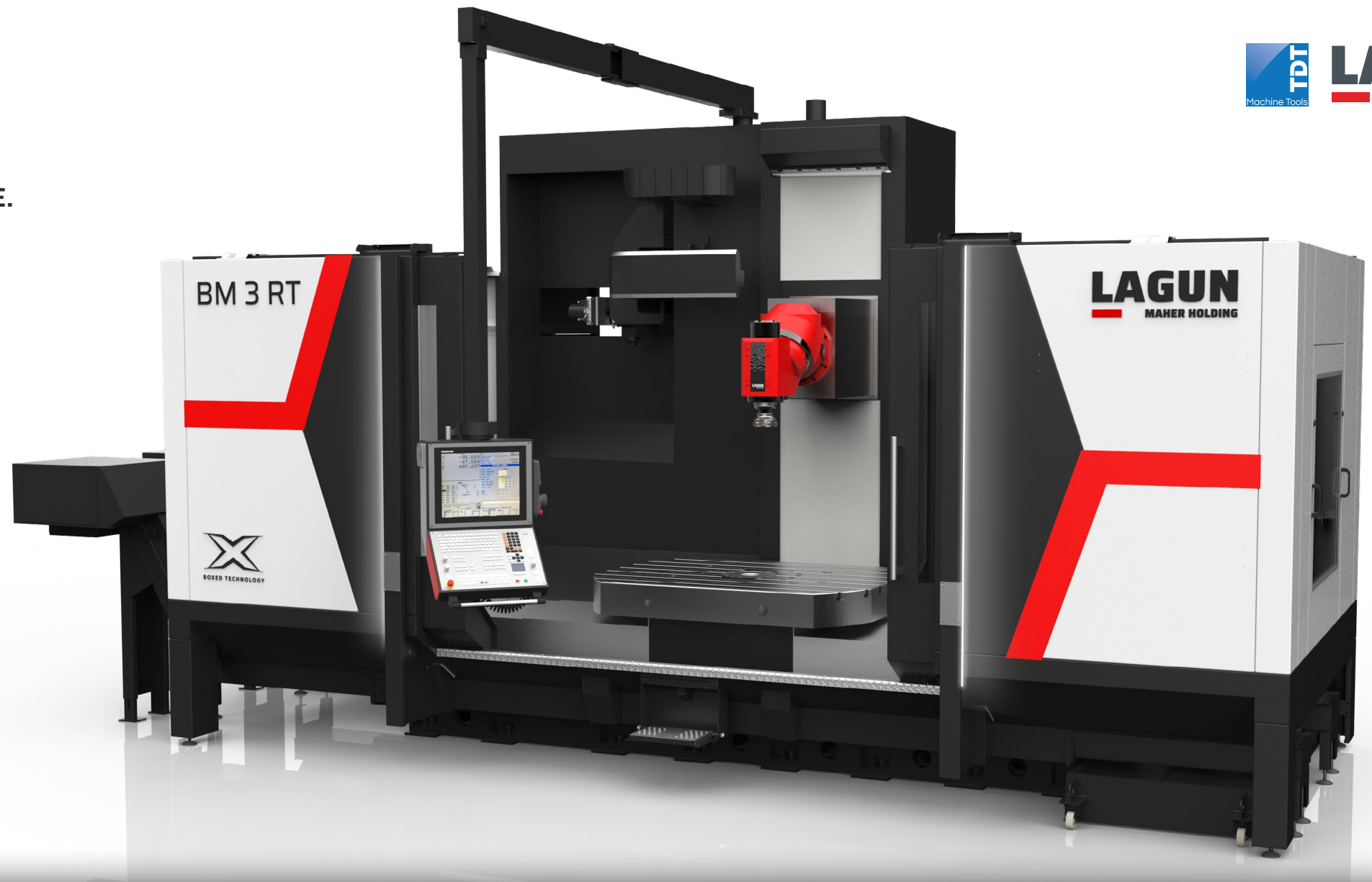
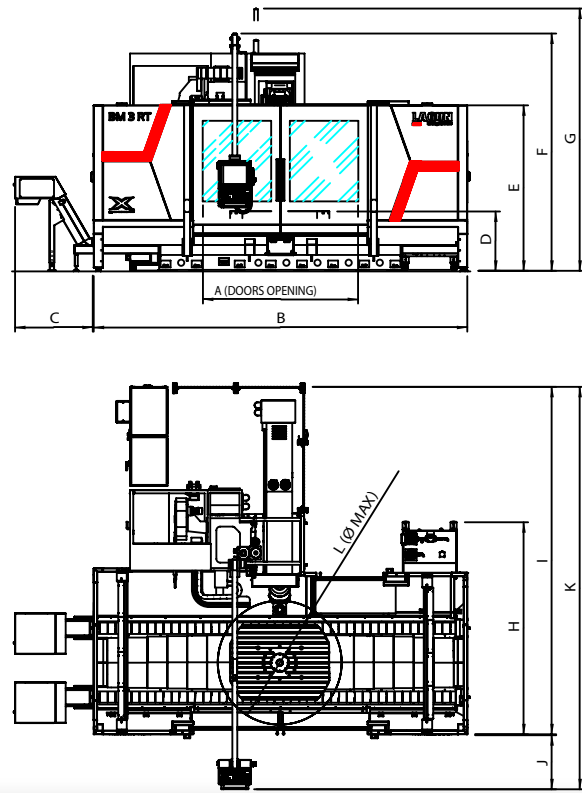
ALARM



Warning LED.

BM RT

BED TYPE MILLING MACHINE WITH ROTARY TABLE.



	A	B	C	D	E	F	G	H	I	J	K	L
BM 2 RT	2.000	5.000										
BM 3 RT	2.500	6.000	1.260	965	2.665 3.165 (1)	3.815 4.315 (1)	----- 4.175 (1)	3.411	5.579	881	6.460	Ø 2.000
BM 4 RT	3.000	7.000										

(1) Optional (Z-2000)

TECHNICAL FEATURES

	BM2 RT	BM3 RT	BM4 RT	
Table surface Aufspannfläche	mm	1.600 x 1.200 / 1.800 x 1.400		
T slots T-Nuten	mm	7 x 22 x 160		
Longitudinal traverse=X Längsverfahrweg=X	mm	2.000	3.000	4.000
Cross traverse=Y Querverfahrweg=Y	mm	1.300		
Vertical traverse=Z Vertikalverfahrweg=Z	mm	1.500 / 2.000*		
Max. Weight on the table Maximale Tischbelastung	Kg	6.000		
Spindle taper Spindelaufnahme		50 DIN 69871/A + DIN 69872/A		
Speed range Spindeldrehzahlbereich	min ⁻¹	6.000		
Main motor power Spindelmotor	kW	31 - 37,2 / 40 - 53*		
Torque Drehmoment	Nm	982 / 1.400*		
Rapid feed Eilgänge	mm/mn	30.000		
Machine net weight Maschinen-Nettogewicht	Kg	17.400	20.900	24.400

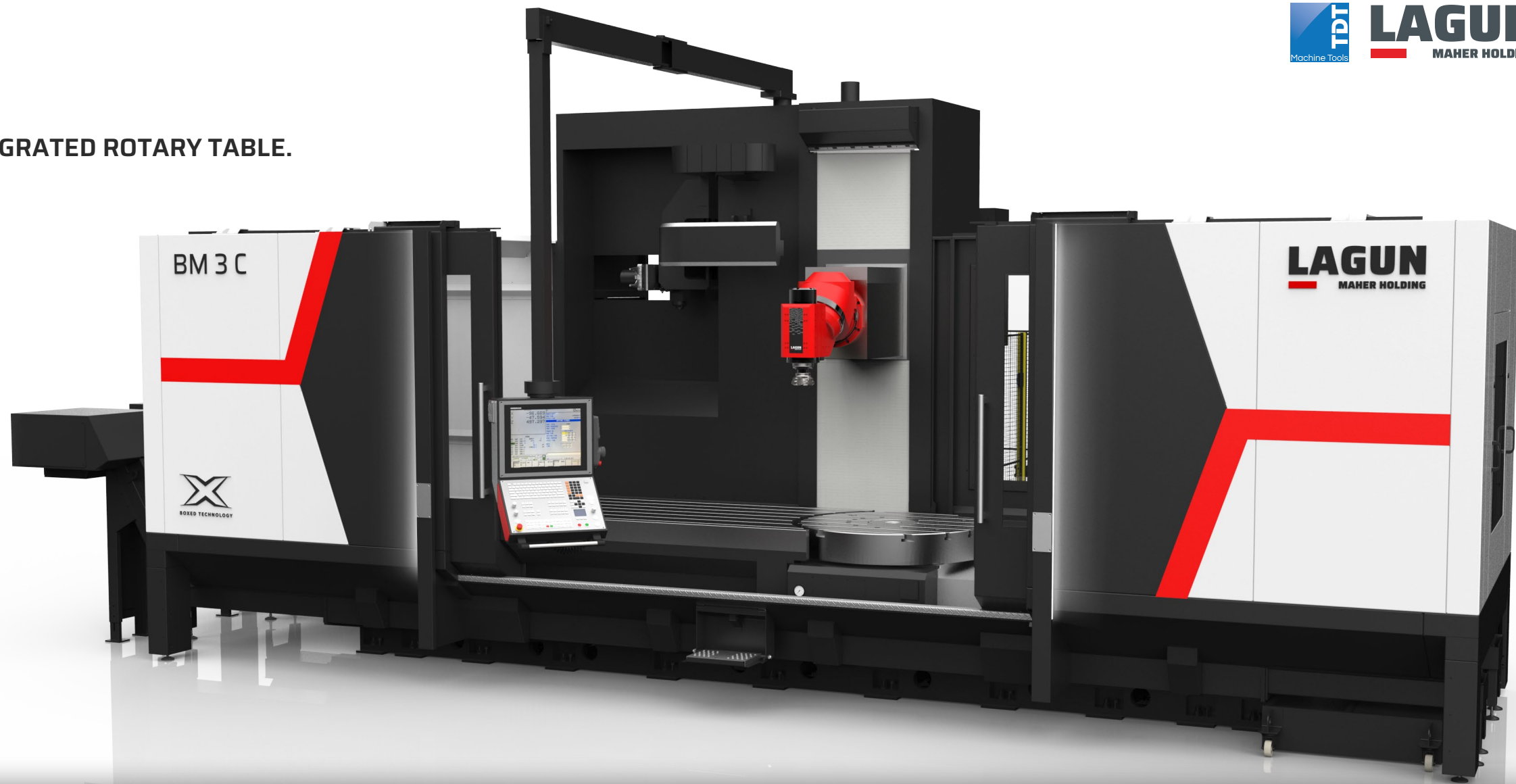
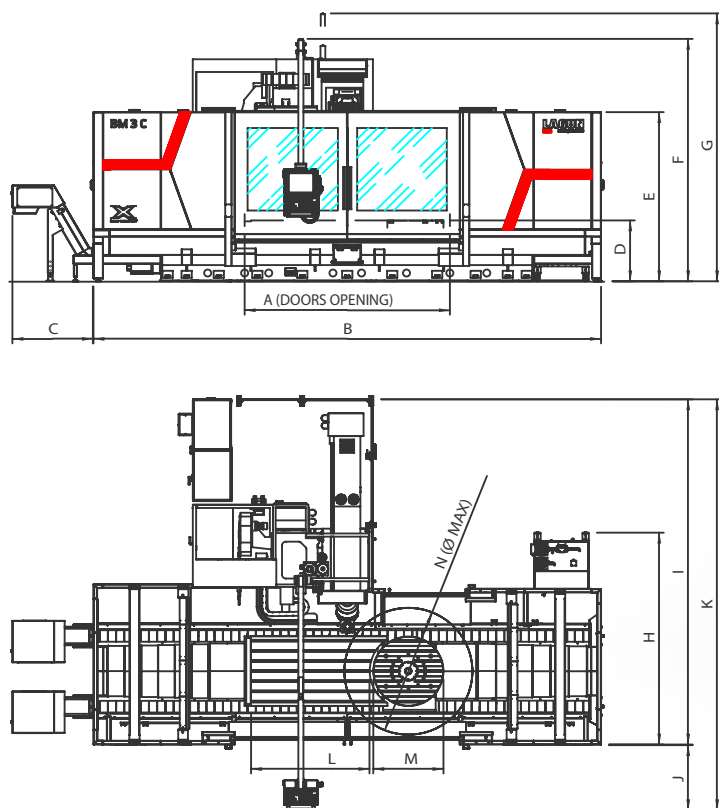
*Opcional / Wahlfrei



Accessibility to the working table.

BM C

BED TYPE MILLING MACHINE WITH INTEGRATED ROTARY TABLE.



	A	B	C	D	E	F	G	H	I	J	K	L	M	N
BM 3 C	3.200	7.900		965	2.665	3.815	-----	3.335	5.429	1.031	6.460	1.850	Ø 1.100	Ø 2.000
BM 4 C	4.200	9.900	1.260	965	3.165 (1)	4.315 (1)	4.715 (1)					2.850		

(1) Optional (Z-2000)

TECHNICAL FEATURES

		BM 3 C	BM 4 C
Table surface Aufspannfläche	mm	(2.000 + Ø1.100) x 1.100	(3.000 + Ø1.100) x 1.100
T slots T-Nuten	mm		7 x 22 x 160
Longitudinal traverse=X Längsverfahrweg=X	mm	3.000	4.000
Cross traverse=Y Querverfahrweg=Y	mm		1.300
Vertical traverse=Z Vertikalverfahrweg=Z	mm		1.500 / 2.000*
Max. Weight on the table Maximale Tischbelastung	Kg	8.000 + 6.000	10.000 + 6.000
Spindle taper Spindelaufnahme			50 DIN 69871/A + DIN 69872/A
Speed range Spindeldrehzahlbereich	min ⁻¹		6.000
Main motor power Spindelmotor	kW		31 - 37,2 / 40 - 53*
Torque Drehmoment	Nm		982 / 1.400*
Rapid feed Eilgänge	mm/mn		30.000
Machine net weight Maschinen-Nettogewicht	Kg	21.800	26.000

*Opcional / Wahlfrei

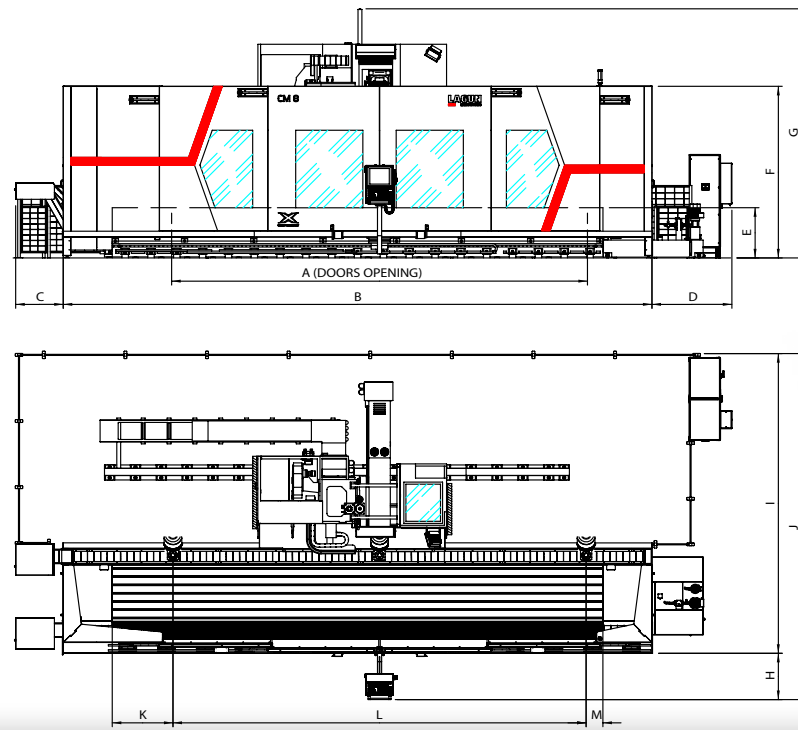


Improved access to the inside of the machine

- Anti-slip profile.
- Folding step

CM-CL

MOVING COLUMN / FIXED TABLE MILLING MACHINES.



	A	B	C	D	E	F	G	H	I	J	K	L	M
CM - CL 4	4.050	7.400 / 7.535 (3)										4.000	
CM - CL 5	5.050	8.400 / 8.535 (3)										5.000	
CM - CL 6	6.050	9.400 / 9.535 (3)				3.320	3.820		5.801	6.696		6.000	325
CM - CL 8	8.050	11.400 / 11.535 (3)	920	1.547	970	3.320 (1) 3.820 (2)	4.820 (1) 4.820 (2)	895	6.259 (2) 6.131 (3)	7.154 (2) 7.026 (3)	1.175 1.335 (3)	8.000	300 (3)
CM - CL 10	10.050	13.400 / 13.535 (3)										10.000	
CM - CL 12	12.050	15.400 / 15.535 (3)										12.000	

(1) CM/CL (Z-2000) - (2) Optional CL (Z-2500) - (3) Standard CL

TECHNICAL FEATURES

		CM 4	CM 5	CM 6	CM 8	CM 10	CM 12	CL 4	CL 5	CL 6	CL 8	CL 10	CL 12
Table surface Aufspannfläche	mm	(5.500 - 6.500 - 7.500 - 9.500 - 11.500 - 13.500) x 1.100						(5.635 - 6.635 - 7.635 - 9.635 - 11.635 - 13.635) x 1.300					
T slots T-Nuten	mm	7 + 2 x 22 x 160						8 + 2 x 22 x 160					
Longitudinal traverse=X Längsverfahrweg=X	mm	4.000	5.000	6.000	8.000	10.000	12.000	4.000	5.000	6.000	8.000	10.000	12.000
Cross traverse=Y Querverfahrweg=Y	mm	1.300						1.500					
Vertical traverse=Z Vertikalverfahrweg=Z	mm	1.500 / 2.000*						2.000/2.500*					
Max. Weight on the table Maximale Tischbelastung	Kg/ m ²	6.000						6.000					
Spindle taper Spindelaufnahme		50 DIN 69871/A + DIN 69872/A						50 DIN 69871/A + DIN 69872/A					
Speed range Spindeldrehzahlbereich	min ⁻¹	6.000						6.000					
Main motor power Spindelmotor	kW	31-37,2 / 40-53*						40-53					
Torque Drehmoment	Nm	982 / 1.400*						972 / 1.400*					
Rapid feed Eilgänge	mm/mn	30.000						30.000					
Machine net weight Maschinen-Nettogewicht	Kg	28.000	31.000	34.000	40.000	46.000	52.000	32.500	36.000	40.000	48.000	56.000	64.000

*Opcional / Wahlfrei

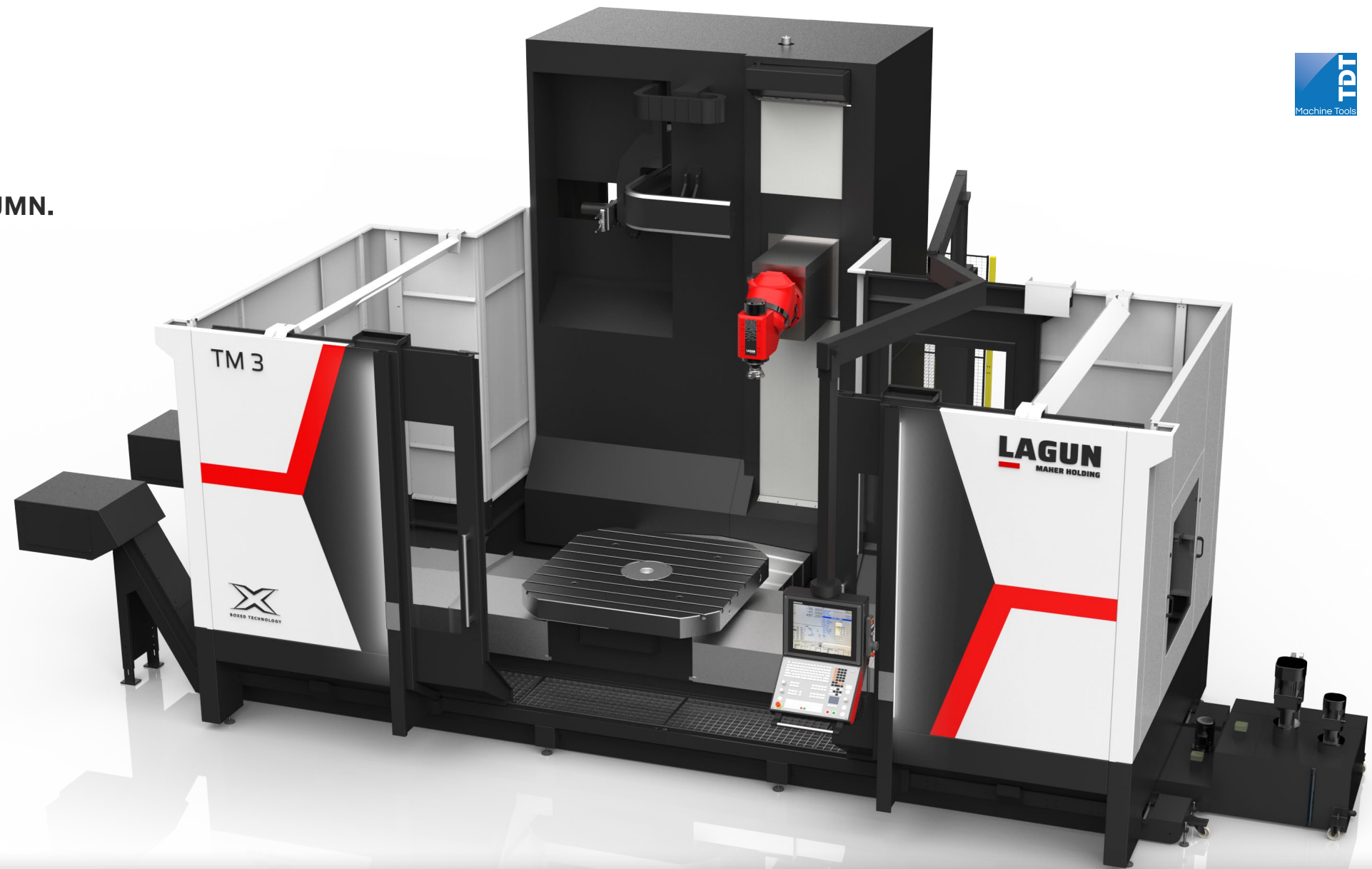
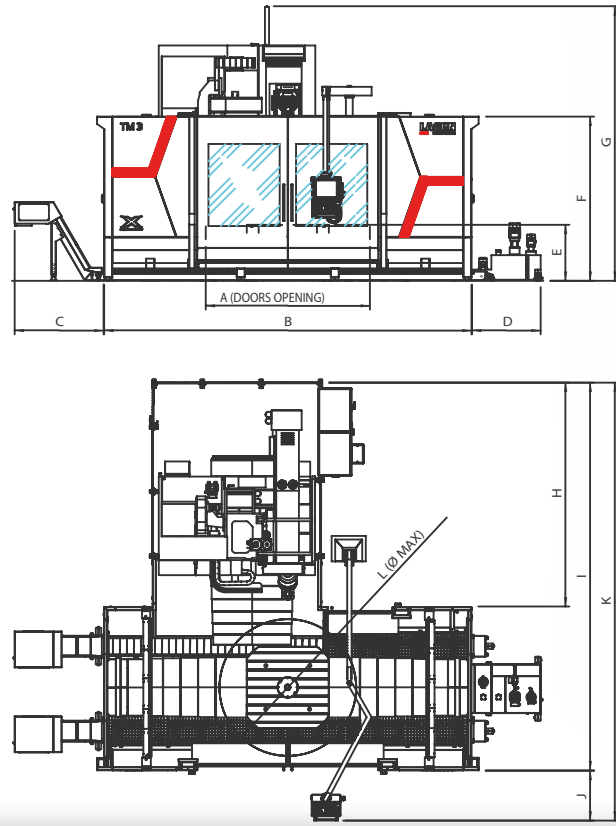


CM C
 Integrated rotary table Ø1000 mm.
 Maximum load capacity 6000 kg.

CL C:
 Integrated rotary table Ø1200 mm.
 Maximum load capacity 6000 kg.

TM-TL

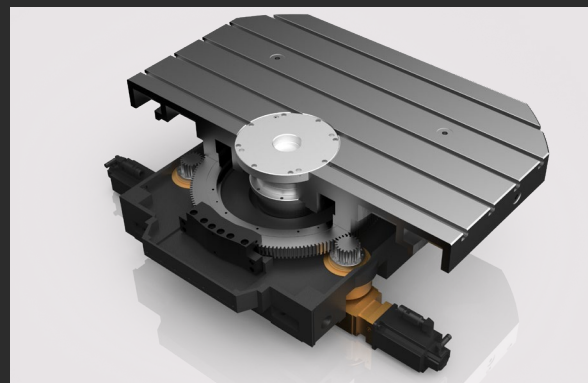
MILLING MACHINE WITH TRANSVERSAL COLUMN.



	A	B	C	D	E	F	G	H	I	J	K	L
TM 2	2.000	5.700										
TM 3	3.000	6.700	1.630	1.260	1.030 1.080 (3)	3.000	4.010 5.010 (1)	4.085 4.585 (2)	7.068 7.568 (2)	916	7.984 8.484 (2)	Ø 2.500
TM 4	4.000	7.700										

(1) Optional

(1) Optional (Z-2000) - (2) Optional (V-1500) - (3) Optional (Plate 1800x1800)



Rotary table with "Twin Drive" pinion-crown system: (advantages)

- Electronic preload
- Precision and repeatability
- Higher rotation speeds

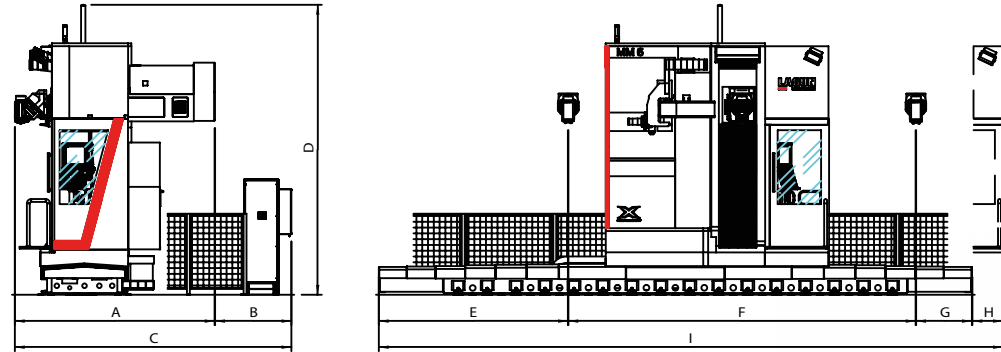
TECHNICAL FEATURES

		TM 2	TM 3	TM 4	TL 2	TL 3	TL 4
Table surface Aufspannfläche	mm	1.500 x 1.500 / 1.800 x 1.800			2.000 x 2.000 / 2.250 x 2.250		
T slots T-Nuten	mm	9 x 22 x 160			11 x 22 x 160		
Longitudinal traverse=X Längsverfahrweg=X	mm	2.000	3.000	4.000	2.000	3.000	4.000
Cross traverse=Y Querverfahrweg=Y	mm	1.300			1.500		
Vertical traverse=Z Vertikalverfahrweg=Z	mm	1.500 / 2.000*			2.500 / 3.000*		
Cross traverse=V Querverfahrweg=V	Kg	1.000 / 1.500*			1.000 / 1.500*		
Max. Weight on the table Maximale Tischbelastung	Kg	10.000			20.000		
Spindle taper Spindelaufnahme		50 DIN 69871/A + DIN 69872/A			50 DIN 69871/A + DIN 69872/A		
Speed range Spindeldrehzahlbereich	min ⁻¹	6.000			6.000		
Main motor power Spindelmotor	kW	31 - 37,2 / 40 - 53*			40 - 53		
Torque Drehmoment	Nm	982 / 1.400*			972 / 1.400*		
Rapid feed Eilgänge	mm/mn	30.000			30.000		
Machine net weight Maschinen-Nettogewicht	Kg	24.500	26.000	27.500	28.700	30.000	31.700

*Optional / Wahlfrei

MM

FLOOR TYPE MILLING MACHINE WITH TRAVELLING COLUMN



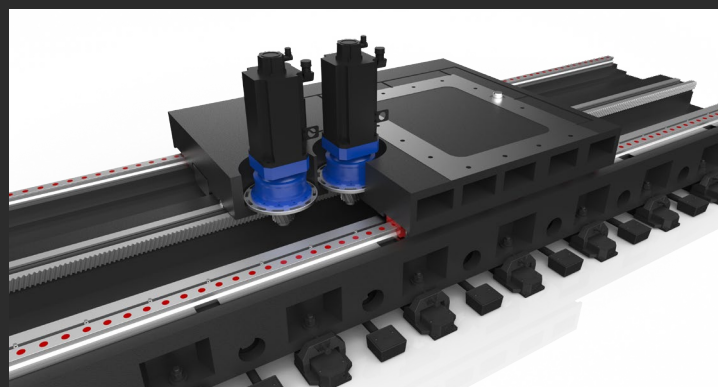
	A	B	C	D	E	F	G	H	I
MM 4					3.271	4.000	971	534	8.776
MM 5					3.271	5.000	971	534	9.776
MM 6	3.455	1.325	4.780	4.010 5.010 (1)	3.271	6.000	971	534	10.776
MM 8					3.403,5	8.000	1.103,5	402	12.909
MM 10					3.403,5	10.000	1.103,5	402	14.909
MM 12					3.545	12.000	1.245	206,5	16.996,5

(1) Optional (Z-2000)

TECHNICAL FEATURES

	MM 4	MM 5	MM 6	MM 8	MM 10	MM 12
Table surface Aufspannfläche	mm Under request / Auf Anfrage					
Longitudinal traverse=X Längsverfahrweg=X	4.000	5.000	6.000	8.000	10.000	12.000
Cross traverse=Y Querverfahrweg=Y	mm 1.300					
Vertical traverse=Z Vertikalverfahrweg=Z	mm 1.500 / 2.000*					
Max. Weight on the table Maximale Tischbelastung	Kg/ m ² Under request / Auf Anfrage					
Spindle taper Spindelaufnahme	50 DIN 69871/A + DIN 69872/A					
Speed range Spindeldrehzahlbereich	min ⁻¹ 6.000					
Main motor power Spindelmotor	kW 31 - 37,2 / 40 - 53*					
Torque Drehmoment	Nm 982 / 1.400*					
Rapid feed Eilgänge	mm/mn 30.000					
Machine net weight Maschinen-Nettogewicht	22.500	23.500	24.500	26.500	28.500	30.500

*Optional

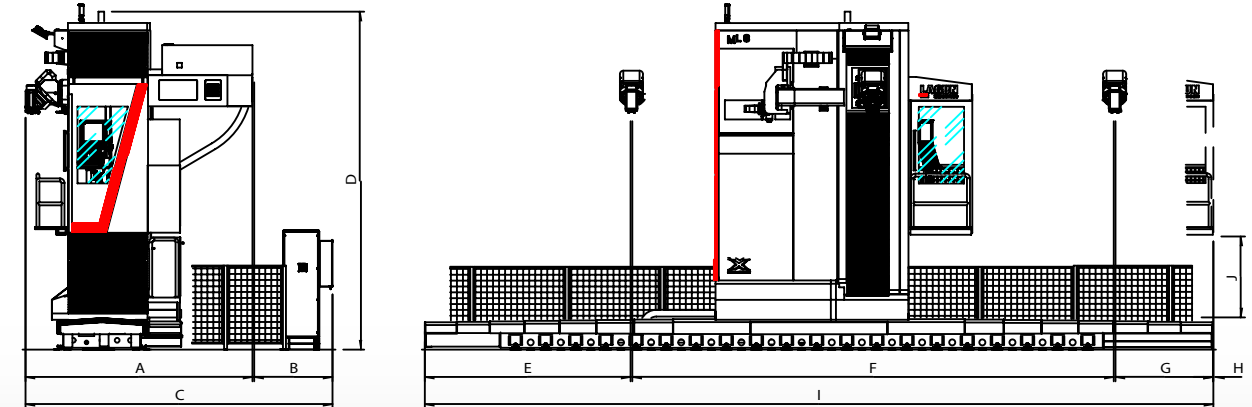


Levelling, alignment and anchoring elements.

X-axis with a double pinion-rack system with electronic preload.

ML-MP

FLOOR TYPE MILLING MACHINE WITH TRAVELLING COLUMN



	A	B	C	D	E	F	G	H	I	J
ML - MP 4					3.302,5 / 3452,5 (4)	4.000	1.509,5 / 1.359,5 (4)	139,5 / 289,5 (4)	8.951,5 / 9.101,5 (4)	
ML - MP 5					3.302,5 / 3452,5 (4)	5.000	1.509,5 / 1.359,5 (4)	139,5 / 289,5 (4)	9.951,5 / 10.101,5 (4)	
ML - MP 6	3.786		5.111	4.872	3.302,5 / 3452,5 (4)	6.000	1.509,5 / 1.359,5 (4)	139,5 / 289,5 (4)	10.951,5 / 11.101,5 (4)	
ML - MP 8	3.886 (4)	1.325	5.211 (4)	6.387 (2)	3.435 / 3.585 (4)	8.000	1.642 / 1.492 (4)	7 / 157 (4)	13.084 / 13.234 (4)	1.900
ML - MP 10				7.167 (3)	3.435 / 3.585 (4)	10.000	1.642 / 1.492 (4)	7 / 157 (4)	15.084 / 15.234 (4)	
ML - MP 12					3.576,5 / 3.726,5 (4)	12.000	1.783,5 / 1.633,5 (4)	- - / 15,5 (4)	17.360 / 17.375,5 (4)	

(1) ML (Z-3000) - (2) Optional MP (Z-3500) - (3) Optional MP (Z-4000) - (4) Standard MP

TECHNICAL FEATURES

	ML 4	ML 5	ML 6	ML 8	ML 10	ML 12	MP 4	MP 5	MP 6	MP 8	MP 10	MP 12
Table surface Aufspannfläche	Under request						Under request					
Longitudinal traverse=X Längsverfahrweg=X	4.000	5.000	6.000	8.000	10.000	12.000	4.000	5.000	6.000	8.000	10.000	12.000
Cross traverse=Y Querverfahrweg=Y	1.500						1.500					
Vertical traverse=Z Vertikalverfahrweg=Z	2.500 / 3.000*						3.500 / 4.000*					
Max. Weight on the table Maximale Tischbelastung	Under request / Auf Anfrage						Under request / Auf Anfrage					
Spindle taper Spindelaufnahme	50 DIN 69871/A + DIN 69872/A						50 DIN 69871/A + DIN 69872/A					
Speed range Spindeldrehzahlbereich	6.000						6.000					
Main motor power Spindelmotor	40 - 53						40 - 53					
Torque Drehmoment	972 / 1.400						972 / 1.400					
Rapid feed Eilgänge	30.000						30.000					
Machine net weight Maschinen-Nettogewicht	22.500	26.500	27.500	29.500	31.500	33.500	29.500	30.500	31.500	33.500	35.500	37.500

*Optional

Positioning and locking by Hirth coupling.

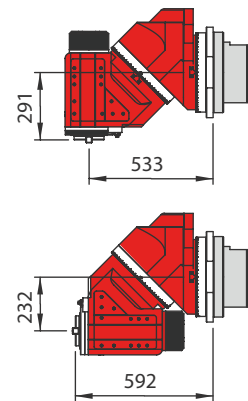
LU A



UNIVERSAL AUTOMATIC MILLING HEAD.

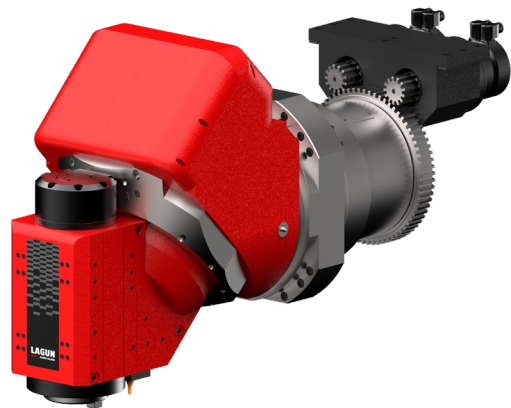
Universal automatic milling head every 1° positioning on both bodies.

Positioning controlled by two encoders 6.000 rpm.



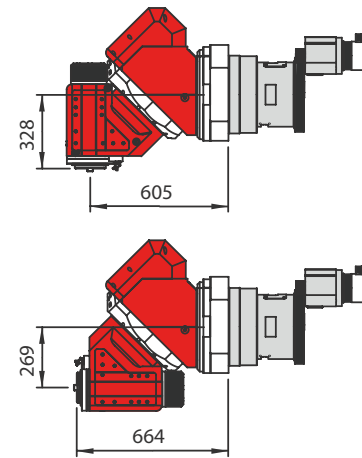
Motorized head rotation and positioning with hydraulic brake.

LU S / LU C



STEPLESS SIMULTANEOUS MILLESIMAL UNIVERSAL MILLING HEAD.

Head with motorized rotation of the two bodies. Simultaneous positioning (with one motor in each body) and with cutting capacity in continuous rotation (with two motors on each body of the milling head). 6.000 rpm



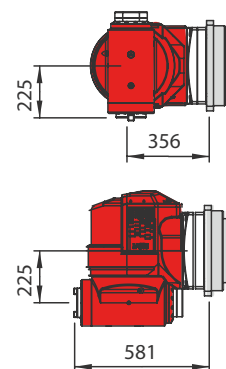
LO S



STEPLESS SIMULTANEOUS ORTHOGONAL MILLING HEAD.

Head with motorized rotation of the two bodies. Simultaneous positioning.

Swivel range: +15° to -195°. 4.000 rpm.

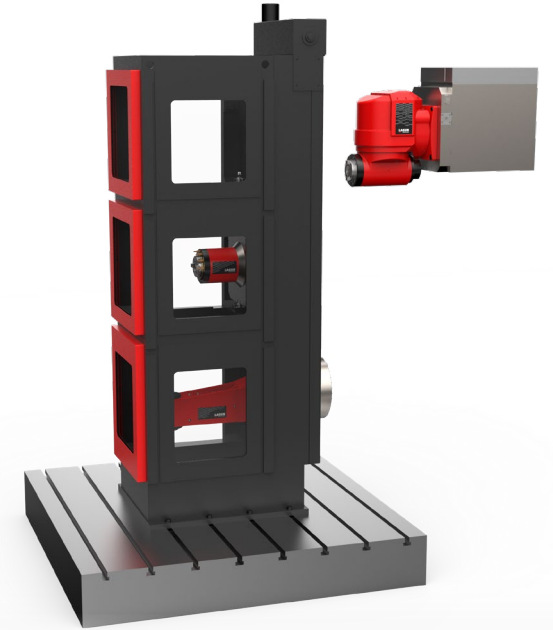


Automatic head change system.

LOX S



LO S for automatic heads changing in the series MLX and MPX.



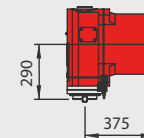
SPECIAL HEADS

AIMED AT PARTICULAR APPLICATION SOLUTIONS.

LV

HIGH ROBUSTNESS VERTICAL HEAD.

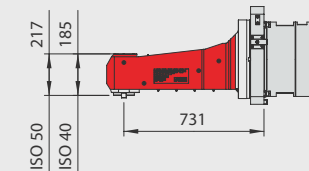
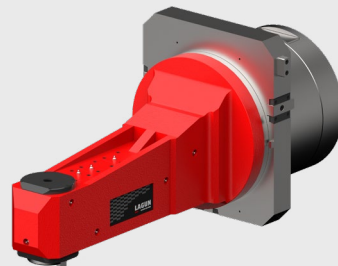
High removal rate.
S max.: 1.800 or 2.000 rpm depending on preload.



L90X A1 / L90X A1-ISO40

L TYPE ANGULAR HEAD.

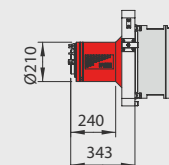
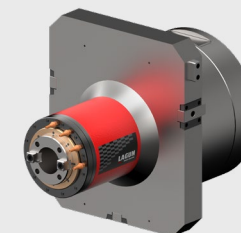
L TYPE angular head with automatic rotation of the body every 1°. Ready for automatic head changing. S max.: 1.800 rpm/2.000 rpm.



LHX 240

SHORT HORIZONTAL HEAD.

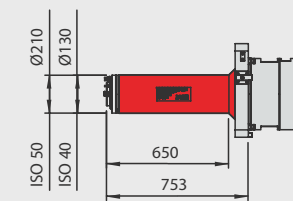
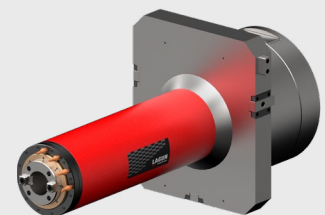
Highly robust horizontal head. Ø210 L 240, ISO 50. Automatic head changing option. S max.: 4.000 rpm (5.000 rpm if it is cooled).



LHX 650 / LHX 650-ISO40

LONG HORIZONTAL HEAD.

Highly robust horizontal head. Ø210 L 650, ISO 50 / Ø130 L 650, ISO 40. Automatic head changing option. S max.: 3.000 rpm



Presented by:



Email: sales@tdt-machinetools.co.uk
Web: www.tdt-machinetools.co.uk
TDT Machine Tools Ltd,
Unit 19, Woodside Park,
Rugby, Warwickshire,
CV21 2NP
Office: +44 (0)1788 570411
Social: [#TheBigMachineCompany](https://twitter.com/TheBigMachineCompany)

LAGUN
MAHER HOLDING

Lagun Machine Tools S.L.
Bazterretxe Auzoa, 4
20720 Azkoitia - Gipuzkoa (Spain)

Tel: +(34) 943 840 066
sales@lagunmt.com

www.lagunmt.com
www.maherholding.es



Do you want to know
more about **LAGUN** Milling
machines?

Benötigen Sie weitere
Informationen über
LAGUN Fräsmaschinen?



In this catalogue pictures there are some accessories that are not standard - All the specifications may be altered without previous notice.
In diesem Katalog sind einige Zubehörteile enthalten, die nicht dem Standard entsprechen. Alle technischen Daten, welche zu technischen Verbesserungen führen, können ohne vorherige Ankündigung geändert werden.