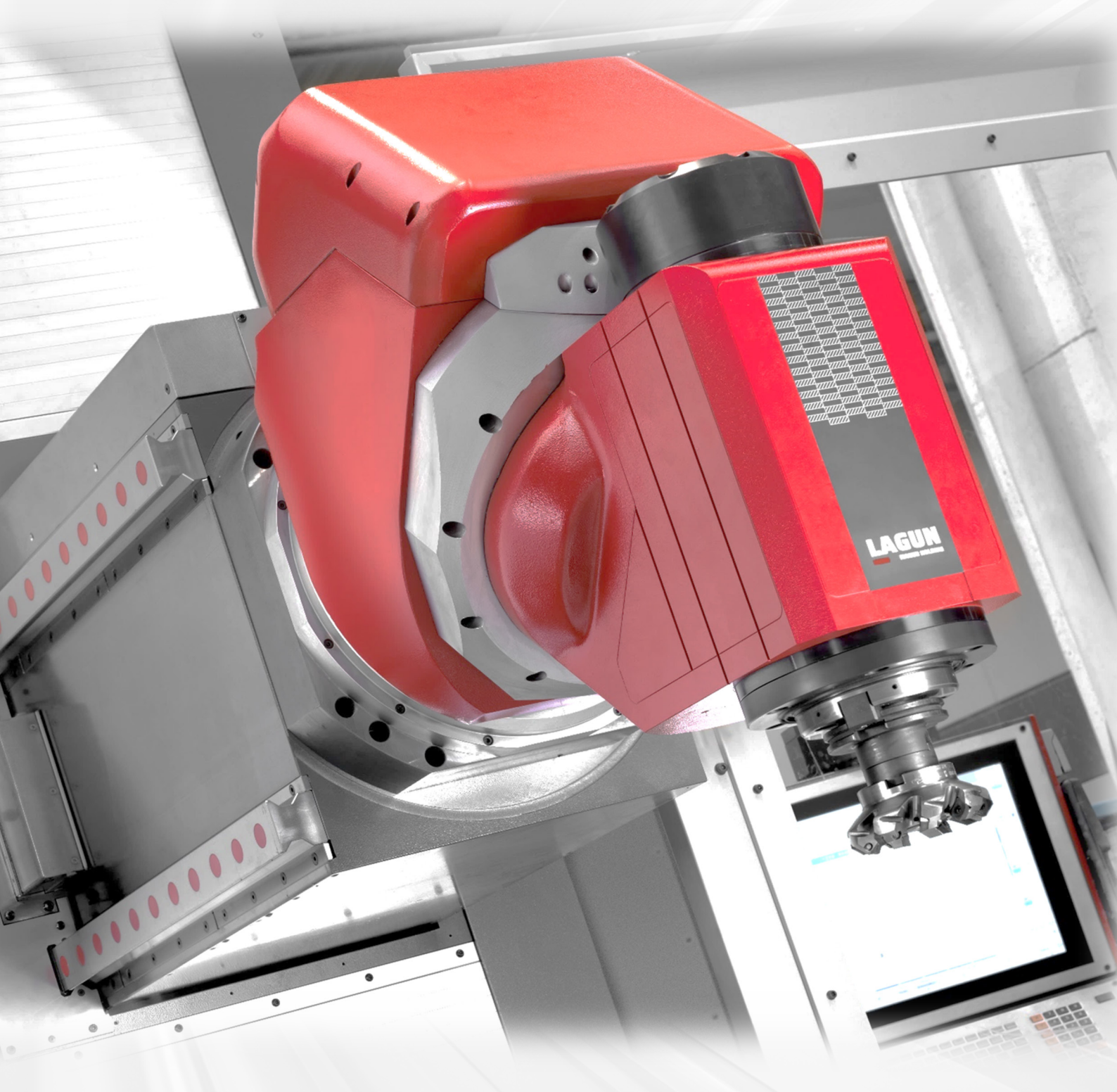


In Stock

New CNC Universal Bed Mills, Horizontal Borers and Vertical Lathes,
in stock, in build and ex-demo.



Spring 2024 Edition



Universal Bed Mills
4 – 8 weeks from Spain.



Lagun BM 3 and BM 4
Available - 4 weeks

3 and 4 Metre Travelling table universal bed mills.

BM 3 - X3,000 x Y1,300 x Z1,500mm travel
BM 4 - X4,000 x Y1,300 x Z1,500mm travel
Choice of programmable universal head
Spindle Power 38kW
X,Y,Z Heidenhain linear scales
20 Bar Coolant plus air pressure option
24 Tool magazine



Lagun BM 3 RT
Available - 8 Weeks

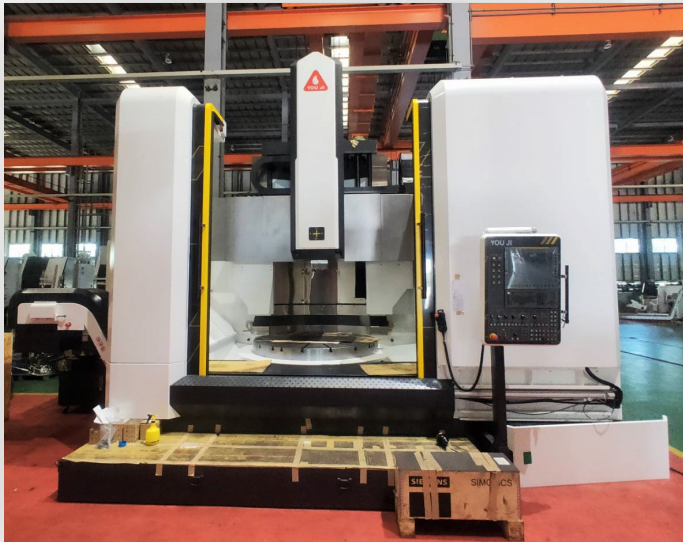
3 Metre Universal bed mill with rotary table.

Travel - X3,000 x Y1,300 x Z1,500mm
Table - X1,600mm x 1,200mm 0.001° rotary
Choice of programmable universal heads
Spindle Power 38kW
X,Y,Z Heidenhain linear scales
20 Bar Coolant plus air pressure option
40 Tool magazine



Click or scan QR code for more information on Lagun range.

Vertical Turning / boring from You Ji.
The worlds largest VTL manufacturer.
Popular models always in build.



1,200mm and 1,600 dia. Table Vertical Lathes with C Axis

Table Dia:	1,200 / 1,600mm
Max Swing:	1,600 / 2,000mm
Max Turn:	1,350 / 1,800mm
Max Turn Height:	1,200mm
Max Weight:	5,000 / 8,000Kg
Main Spindle:	45KW
Live Spindle:	11KW

You Ji VTL 1200 ATC+C – 20 Weeks
1,000mm / 1,200mm / 1,600mm tables
Available 18 - 20 Weeks



2,000mm dia. Table Vertical Lathe with C Axis

Table Dia:	2,000mm
Max Swing:	2,500mm
Max Turn:	2,300mm
Max Turn Height:	1,600mm
Max Weight:	10,000Kg
Main Spindle:	75KW
Live Spindle:	15KW / 26KW

2,000mm tables
Available 26-30 Weeks



Click or scan QR code for more
information on You Ji range.

Heavy Duty and high-speed machining centres from Taiwan.

Kafo



Massive 5m x 5m Double Column machining centre with programmable head

Travel: X5,100 x Y5,200 x Z1,000mm
Spindle Power: 26kW (37KW available)
Max Table load: 20,000Kg
X,Y,Z Heidenhain linear scales
Choice of programmable heads

Kafo RV-5152
In Stock, ready to ship.



Double Column machining centre with manual or programmable head

Travel: X3,100 x Y1,800 x Z900mm
Spindle Power: 26kW (37KW available)
Max Table load: 9,000Kg
Choice of manual heads

Kafo 2 and 3 metre double column.
Choice of manual or programmable head.
Only 90 days to build and ship.



Full Range of Vertical Machining Centres

Heavy Duty with Gearbox or High-Speed Direct Drive Spindles.
Fanuc, Heidenhain or Siemens controls.

Most 800mm, 1,000mm and 1,300mm models available from stock, larger machines, only 90 days to build.



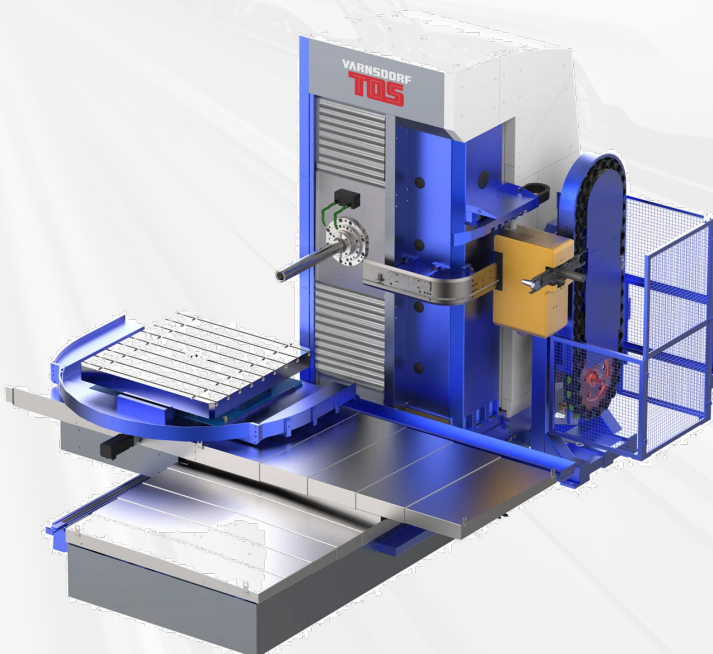
Click or scan QR code for more information on Kafo range.



100mm spindle, entry level table type horizontal borer.

Travel:	X1,800 x Y1,100 (Vertical) x Z940mm, W710mm
Spindle Power:	35kW
Spindle Speed:	Up to 2,500rpm
Max Table load:	3,000Kg
Table	1,000mm x 1,120mm

Regular machine in Tos build program for stock or short delivery.



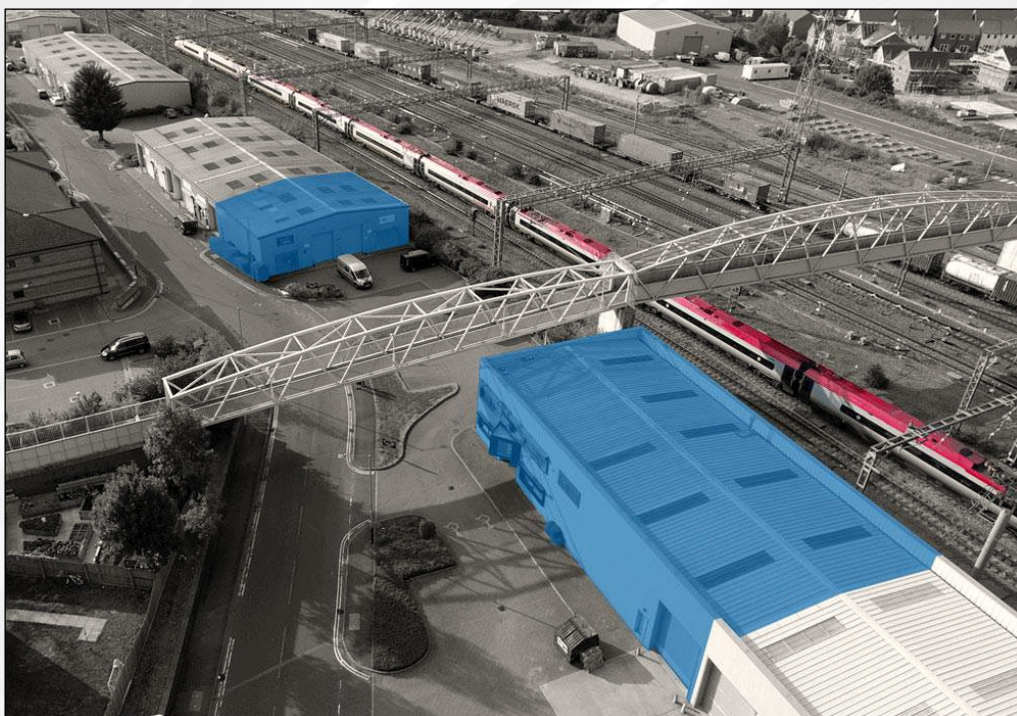
105mm spindle, entry level table type horizontal borer.

Travel:	X1,800 x Y1,250 (Y1,600) x Z1,000mm W630mm
Spindle Power:	35kW
Spindle Speed:	Up to 4,000rpm
Max Table load:	5,000Kg
Table	1,400mm x 1,600mm

Regular machine in Tos build program for stock or short delivery. Many options still available during build.



Click or scan QR code for more information on Tos Varnsdorf range



TDT Machine Tools Limited, headquartered in the heart of the country at Rugby, Warwickshire, is the official UK & Ireland importer, sales distributor, and service agent for a range of CNC machine tools from Lagun, Kafo, You Ji, Feeler, Tos Varnsdorf, Feeler and the German Machine Tool Group (GMTG).



TDT Machine Tools

Unit 20, Woodside Park, Rugby, Warwickshire, CV21 2NP

